



## Graveley and back

Continue past the sculpture into the fields and hug the field boundary, ignoring the first path to your right.

After this, take the path to the right (towards Manor Farm) leading directly to a pylon. Continue along this line and seek out the gap in the hedge.

Bear right and then turn left, heading under the pylon nearby. Rooks Nest can be seen on your right.

Forster could see these pylons from his home, and called them 'naked ladies'. Continue onwards – when you get to Ten Acre Plantation, carry on, keeping the wooded area on your right hand side.

Follow the path, turning left onto Back Lane. After some pretty cottages and a sharp right turn, is a way-sign showing the way to go (you can continue on the road to visit Graveley if you wish).

After 200m, take the path on your left. This will lead you back to the path you were on earlier before the Ten Acre Plantation. At the junction, turn right and head past the pylon to the T-junction.

Turn left and follow the path with the field boundary on your right. Cross to the next field and continue on the path right to the next junction – turn left to get back to St Nicholas Church.



This is one of a series of five guides produced for an exhibition: Dreamers, Radicals & Satirists: Hertfordshire's inspired writers (February to June 2020).

Other walks in this series feature the landscapes of Orwell, Bulwer-Lytton, Shaw and Thomas.

Maps are also available on the ViewRanger app, which also has bonus images and audio (search for BritishSchoolsMuseum).



## British Schools Museum

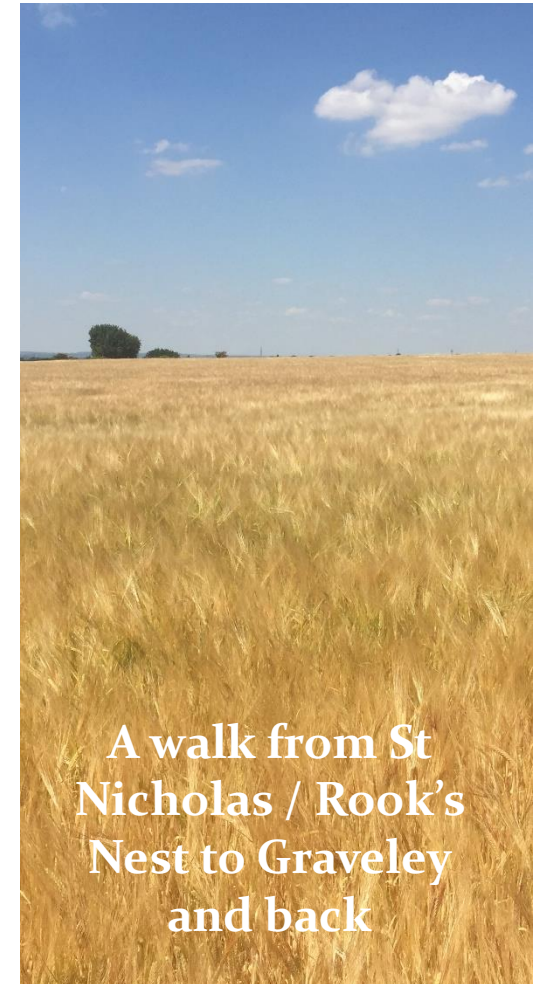
41 Queen Street  
Hitchin SG4 9TS

See website for events, activities  
and opening times



[www.britishschoolsmuseum.org.uk](http://www.britishschoolsmuseum.org.uk)

# EM Forster's country



A walk from St  
Nicholas / Rook's  
Nest to Graveley  
and back

DREAMERS,  
RADICALS  
& SATIRISTS

## EM Forster's country

Walking this route, you will take in sights and sounds of the local area, seeing Rook's Nest across open fields. Do ensure you have a map.

**Distance:** 4 miles / 7.25 km

**Terrain:** Fairly easy, across open country and some minor roads

**Duration:** 3 hours

**Map:** OS Explorer Map 193 Luton & Stevenage or free ViewRanger app

**Parking:** St Nicholas Church, Rectory Lane, Stevenage SG1 4DAS or in the Old Town (1.5 miles away)

### Edward Morgan Forster

(1903-1970) was born into a wealthy family and grew up at Rooks Nest. He felt an affinity for the landscape which he sought to safeguard for the rest of his life. In 1893 the family moved away from Hertfordshire. But Forster visited Rooks Nest whenever he could. It features strongly in his novel *Howards End* (1910).

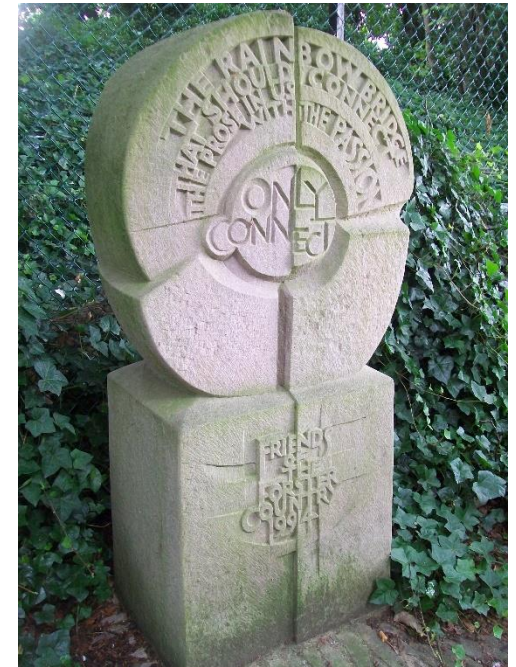


## Rook's Nest

We start at St Nicholas Church. As a humanist, Forster perhaps was not a frequent visitor. Turn left onto Weston Road.

Carefully follow this narrow road for half a mile to Rooks Nest House, the home of EM Forster during his formative years, aged 4-14.

This is a private house so only a glimpse can be gleaned. A distant view from the back will be seen across open country later.



When ready, return back towards St Nicholas Church, turning right when you see a clearing leading to steps and a gate. Follow this path across the cross road and out of the cemetery towards a sculpture.

It is called 'Only Connect' by Angela Godfrey and commemorates the 1994 decision to protect Forster Country within the town's green belt.

Only Connect almost being the theme for the book *Howards End* – connecting the different parts of ourselves and connecting people from varied backgrounds.